

Saving the Vulnerable Road Users

Truck Drivers' Perspective

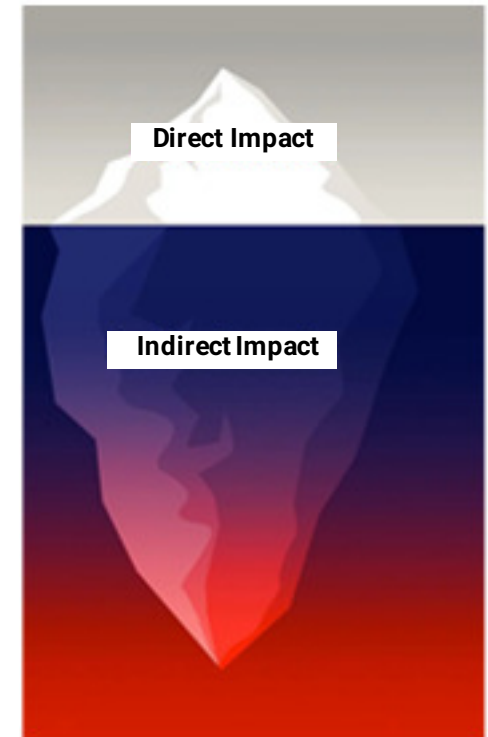


Webinar by TSWG (GIA)



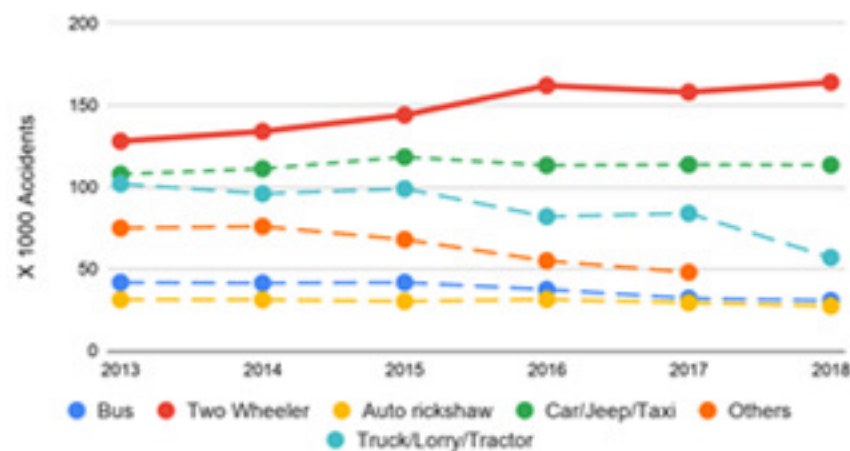
Impacts of Accidents

All accidents come with a Impact depending on degree of severity

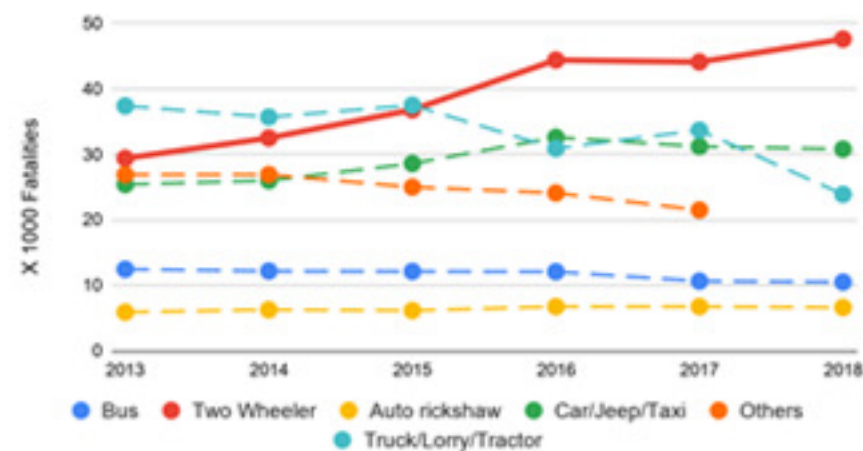


Statistics from Ministry of Road Transport & Highways, GoI

Road Accidents in India



Fatalities from Road Accidents in India



Clearly Two wheeler is the most Vulnerable and Increasing.

Bike Crashes



Bike Crashes - Continue



Bike Crashes - Continued



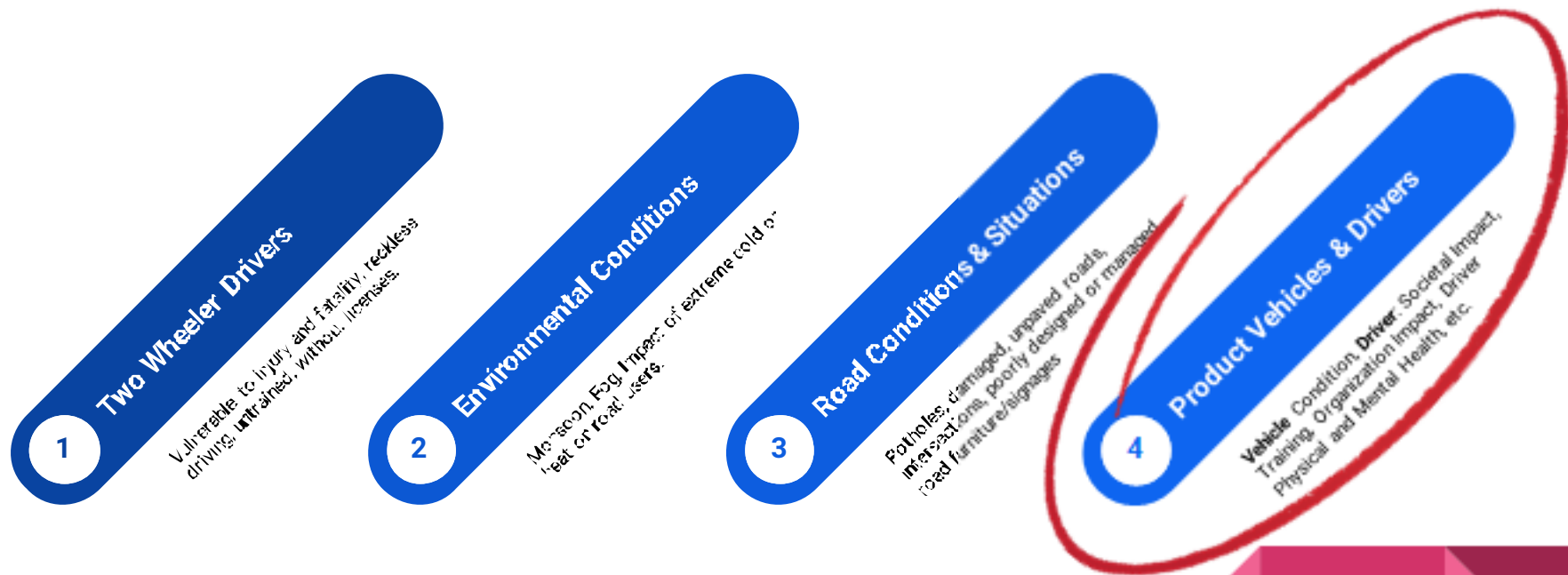
Bike Crashes - Continued



Bike Crashes - Continued



Factors that Influence



Factors Related to :

Vehicle



Vehicle - Overrun Protection

Prevent two wheeler and other Vulnerable road users from falling, sliding or driving underneath the truck.

Important Points to note:

- Prevent 03 types of Underride accidents – Front, Side and Rear underrun accidents
- Energy absorption Capacity - Selection of material and the Structural design.
- Minimum Ground Clearance.
- Check for Missing, damaged or modified **Under Run Protection** devices regularly.

Side Under Run Protection



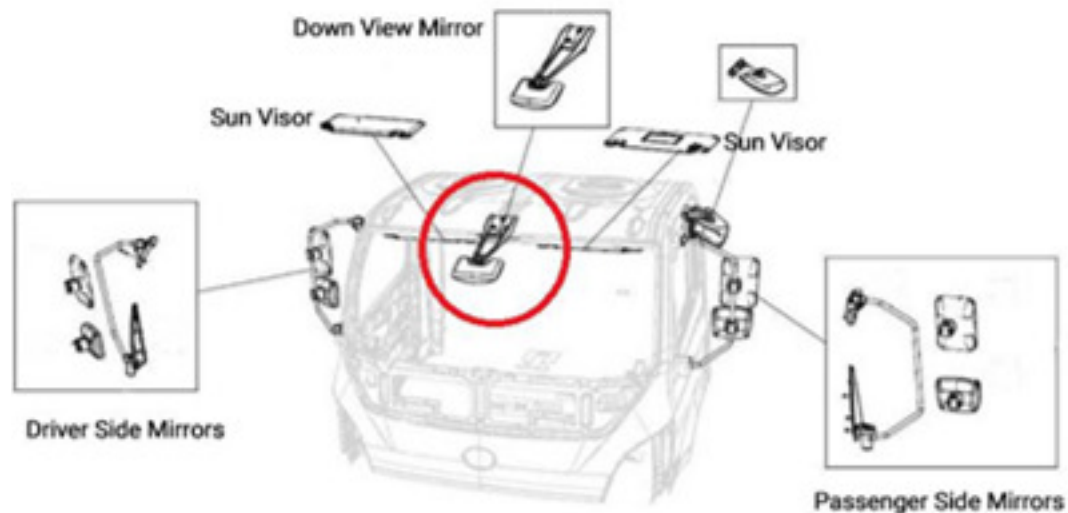
Rear Under Run Protection



Front Under Run Protection



Vehicle - Mirrors & Setup

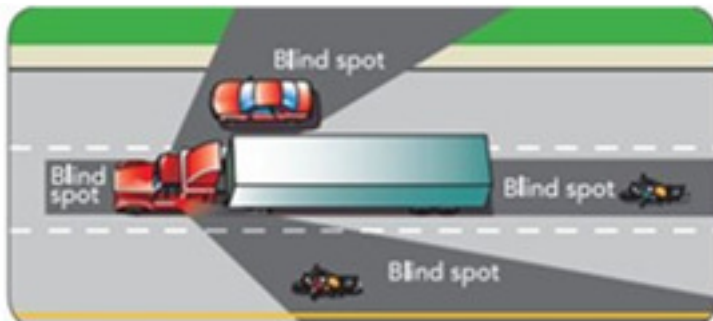


Blind Spot Monitoring

- 04 no.s of NO ZONE, Turning No Zone
- Two wheelers unaware of the dangers entering a large vehicles maneuvering area while it is waiting at traffic junction or making a slow turn.
- Installation, adjustment and Use of Mirror
- Mirror Station – Adjustment of Mirrors



Vehicle - Blind Spot Stickers (Reflective)



- Signage Warn the Bikers and other Vulnerable road users that they are following a vehicle with Large Blind Spots and to remain distant and proceed with caution.
- Signage – Scratch / Chemical resistant, Retro reflective Safety Sign
- Sign Placement - Post on the Sides and the Rear of the Truck / Trailer.



Vehicle - Truck Maintenance

Drivers – Key to Vehicle Maintenance

- Schedule Truck Maintenance
- Encourage Driver Inspections
 - Braking
 - Suspension
 - Steering
- Use Authorized workshops.
- Breakdown / Accidents records
- Cargo securement



Factors Related to :

Driver



Driver - Defensive Driving

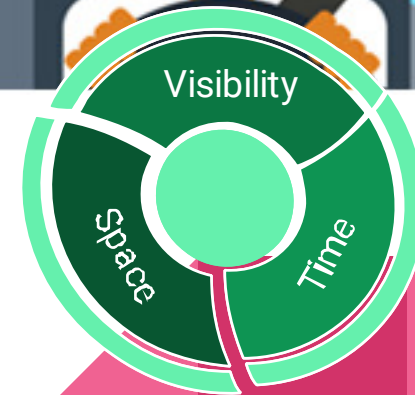
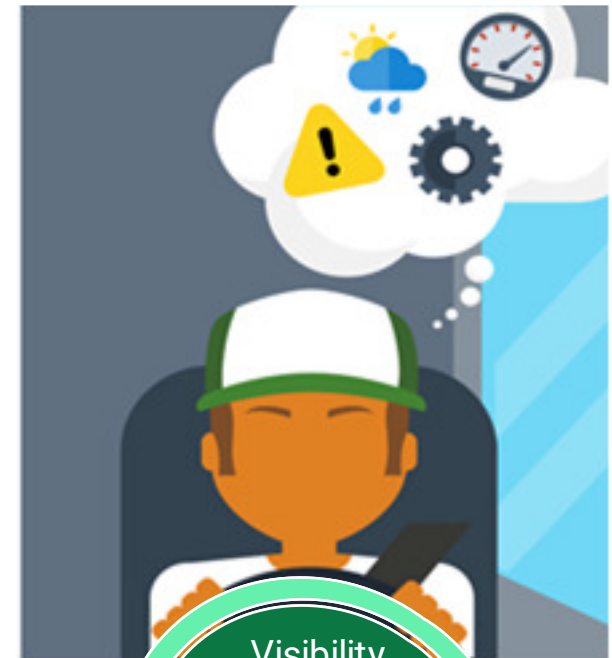
Who is a Defensive driver?

The driver that anticipates risks on road, applies mitigation measures and keeps margin of error (for self & others).

Training - Beyond the Certificate

- Simplified Content
- Effective Delivery
- Driver Absorption
- Implementation by driver

Smith System of Training is one such industry renowned Defensive Driving Training System.



Driver - Anticipating Bike Rider Behaviour

Typical attributes of two wheeler drivers in India:

- **High Probability of fatal Injuries** to head and torso.
- **Low Visibility.**
- Can easily **lose control.**
- **Unpredictable behaviour** (sharp cuts, sudden brakes..).
- Generally **self taught** without **formal training.**

Give due importance to two wheeler drivers.

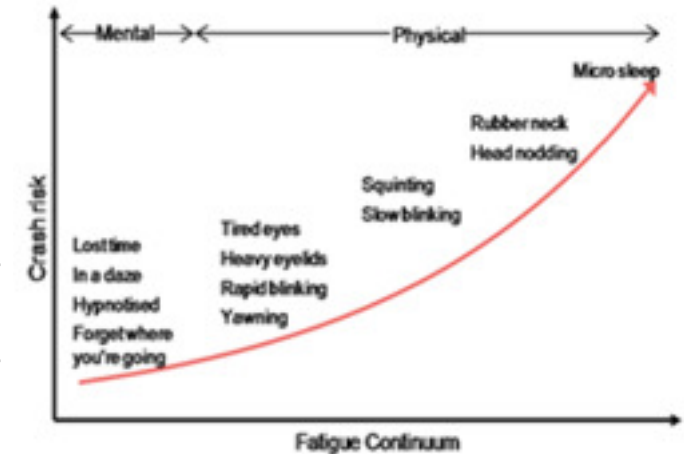
- Spot them from far away.
- Look around to have complete picture of the road.
- Keep moving eyes to monitor two wheeler behaviour.
- Maintain a space buffer.
- Let them know truck's presence - its OK to honk.



Driver- Fatigue

What is **Fatigue**? - An overall feeling of tiredness or lack of energy leading to sleepiness.

Challenge	Solution
Resting Places	Driver Room in the Factory, Designate Suitable halt points, Driver Cabin (sleeping provision).
Sleep Quality	Minimise Disturbance, Provide suitable amenities. Policy for hours of service & rest.
Driver Awareness	Train & help Driver to identify symptoms of fatigue to stop timely.
Listen	Feedback : Drivers, Distribution Teams Video Reviews, Fatigue Monitors.
Accidents during night driving	Administrative control to avoid driving during Curfew hours.(for example : 11:30 PM to 05:00 AM)



Driver - Driving Behaviour



Use of Technology

- Overspeed, Harsh Braking / Maneuvering
- Geofencing, Night Ban Hour, Driving Time Working Time Violations
- Advanced Detection- Fatigue , Distraction, Tailgating
- Review Cab Cameras
- Regular Reports, real time alerts

Role of Organization

- Analyze the Telematics Data.
- Driver Risk Profiling
- Driver Coaching.
- Provide Solution.
- Reward & Reprimand



Driver - Health Conditions

Chronic Conditions

- Medical checks - On recruitment and every year.
- Diabetes, Hypertension, Sleep Disorders - Help driver to manage.
- Self Medication / Impact of Sleep Inducing medicines. -Check with Supervisor.



Food & Nutrition

- Not to miss the meal - Plan for predefined meal breaks.
- Availability of food during Pandemic - Include food in the Trip Plan
- Dehydration in hot and humid weather - Electrolyte based drinks/powders.

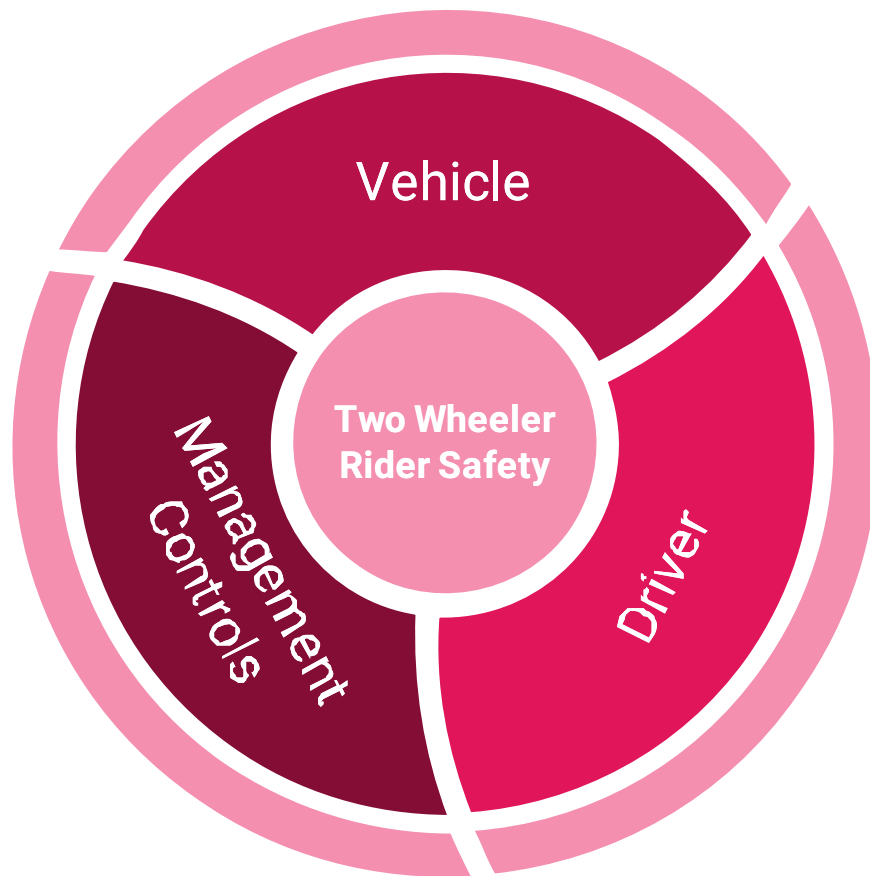


Empower the Driver

- Help him understand when it is not right to drive
- Encourage driver to say NO when unfit.
- Report any unsafe condition.
- Ask, when in doubt.



Conclusion



Two Wheeler Drivers Need
Extra **Attention** !!





Questions ?



Disclaimer

All publications of GIA or bearing GIA's name contain information, including Codes of Practice, safety procedures and other technical information that were obtained from sources believed by GIA to be reliable and/ or based on technical information and experience currently available from members of GIA and others at the date of the publication. As such, we do not make any representation or warranty nor accept any liability as to the accuracy, completeness or correctness of the information contained in these publications.

While GIA recommends that its members refer to or use its publications, such reference to or use thereof by its members or third parties is purely voluntary and not binding.

GIA or its members make no guarantee of the results and assume no liability or responsibility in connection with the reference to or use of information or suggestions contained in GIA's publications.

GIA has no control whatsoever as regards, performance or non performance, misinterpretation, proper or improper use of any information or suggestions contained in GIA's publications by any person or entity (including GIA members) and GIA expressly disclaims any liability in connection thereto.

GIA's publications are subject to periodic review and users are cautioned to obtain the latest edition.

© Reproduced with permission from Asia Industrial Gases Association. All rights reserved.

